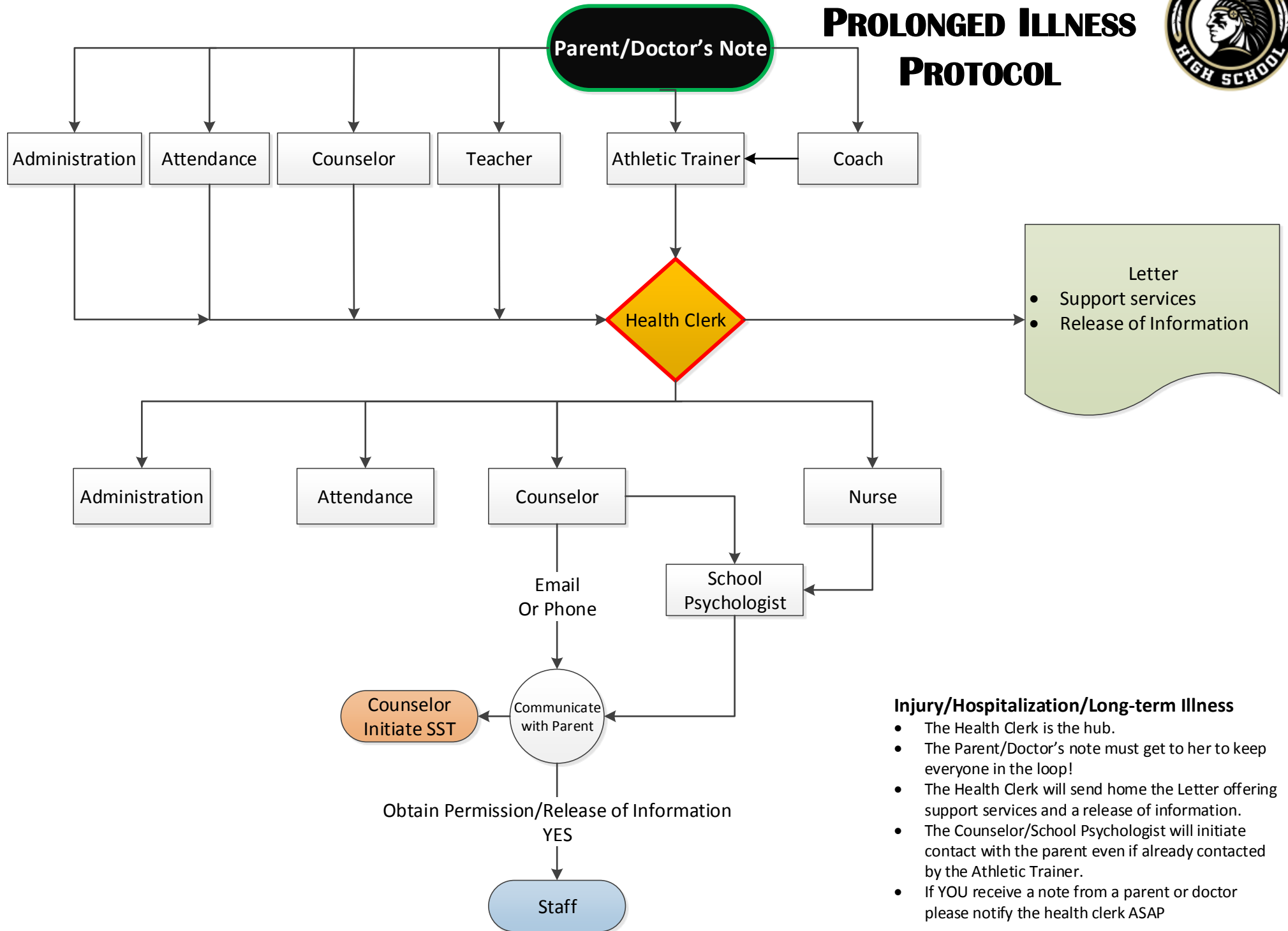


HOSPITALIZATION/INJURY/ PROLONGED ILLNESS PROTOCOL



Injury/Hospitalization/Long-term Illness

- The Health Clerk is the hub.
- The Parent/Doctor's note must get to her to keep everyone in the loop!
- The Health Clerk will send home the Letter offering support services and a release of information.
- The Counselor/School Psychologist will initiate contact with the parent even if already contacted by the Athletic Trainer.
- If YOU receive a note from a parent or doctor please notify the health clerk ASAP